

Melbourne Sports & Aquatic Centre

NORTHERN FENCE REPLACEMENT



STATE
SPORT
CENTRES

#YOURSTATEYOURSPORT

statesportcentres.com.au

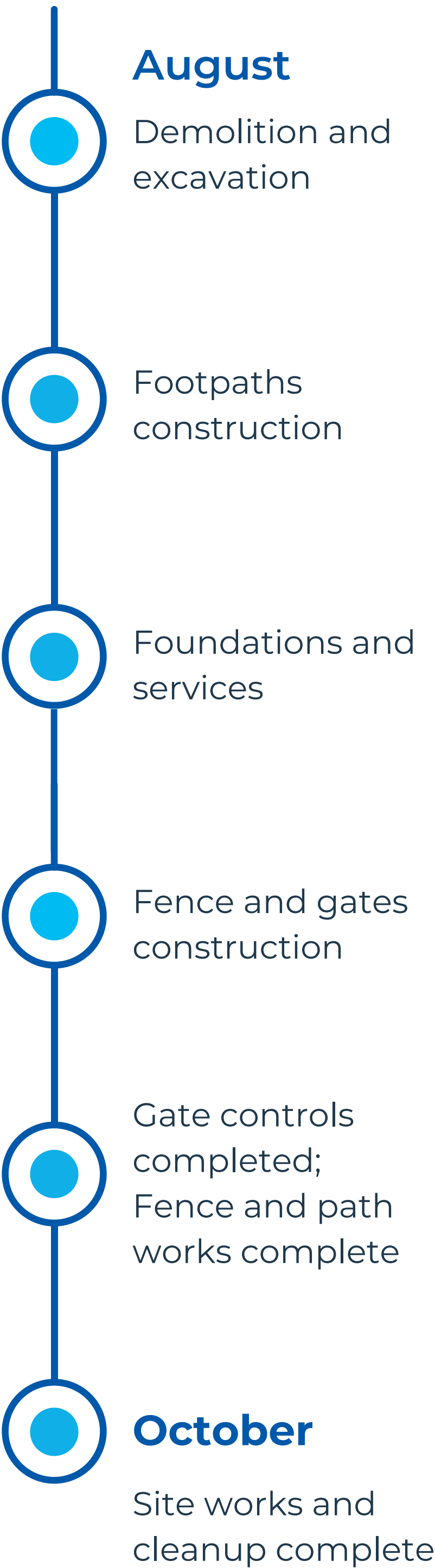


Part of MSAC's **northern fence** and its immediate surrounds are aged and in deteriorating condition. Works to replace the fence are required to meet the venue's ongoing operational, safety and security requirements and to improve presentation.

This work will improve security at MSAC with updated entry and exit points and will address risks associated with access to water services and fire hydrants.

We will also replace damaged and cracking footpaths, build new retaining walls and update garden beds to improve the area's aesthetic.

Site works timeline



What are we doing?

The whole of the northern fence will be replaced, starting at Sir Albert Café around the outdoor pool and ending at the corner of the outdoor grandstand.

Paths will be realigned and repaired where they are in poor condition.

Access gates will be updated and automated.

Garden beds and retaining walls will be redefined to control soil and mulch spills over pathways and into drains

Screens and cabinets around fire connection points and at the café will be replaced.

Why is this project important?

The current alignment of the fence and nearby infrastructure creates obstructions including necessary access to mains water services and fire service hydrants. Security is also compromised due to access points being key-locked with manual gates. These issues will be resolved through delivering the planned works, reducing risks to pedestrian traffic in the area, allowing ease of access to essential services and better managing venue security.

Works will improve presentation of the site and surrounding pathways through repair, replacement and realignment, while retaining walls will allow for new garden beds.

Impact

Impact will be restricted to work areas. Some pedestrian pathways will be closed with diversions and signage in place.

The project will also require intermittent road closures, with traffic management in use as required.

The outdoor pool will remain open but its dedicated amenities will be closed. Aquatics foyer amenities will still be available.

Potential risks

Work is considered low risk but could be subject to delay in the event of extreme weather.

At areas impacted by existing gas mains, an alternate fence design has been developed to avoid need for underground work.

Melbourne Sports & Aquatic Centre

NORTHERN FENCE REPLACEMENT

Part of MSAC's **northern fence** and its immediate surrounds are aged and in deteriorating condition. Works to replace the fence are required to meet the venue's ongoing operational, safety and security requirements and to improve presentation.

This work will improve security at MSAC with updated entry and exit points and will address risks associated with access to water services and fire hydrants.

We will also replace damaged and cracking footpaths, build new retaining walls and update garden beds to improve the area's aesthetic.

Alternate access path



Site works timeline

- August**
 - Demolition and excavation
 - Footpaths construction
 - Foundations and services
- September**
 - Fence and gates construction
- October**
 - Gate controls completed; Fence and path works complete
 - Site works and cleanup complete

What are we doing?

The northern fence will be replaced, starting at Sir Albert Café around the outdoor pool and ending at the corner of the outdoor grandstand.

Paths will be realigned and repaired where they are in poor condition.

Access gates will be updated and automated.

Garden beds and retaining walls will be redefined to control soil and mulch spills over pathways and into drains.

Screens and cabinets around fire connection points and at the café will be replaced.

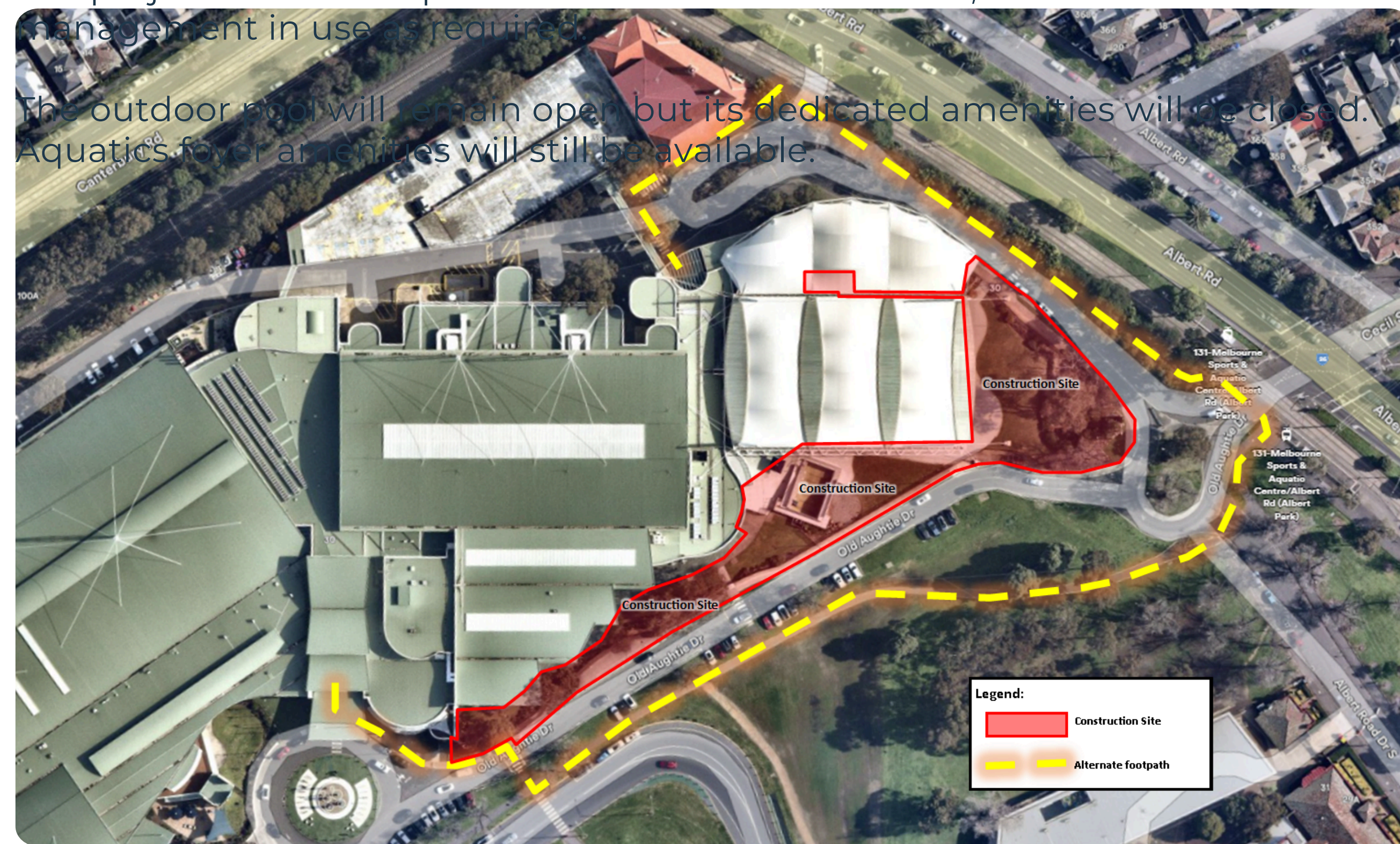
Works will improve presentation of the site and surrounding pathways through repair, replacement and realignment, while retaining walls will allow for new garden beds.

Impact

Some pedestrian pathways will be closed with diversions and signage in place. (See map, left)

The project will also require intermittent road closures, with traffic management in use as required.

The outdoor pool will remain open but its dedicated amenities will be closed. Aquatics fan amenities will still be available.



Melbourne Sports & Aquatic Centre NORTHERN FENCE REPLACEMENT

Part of MSAC's **northern fence** and its immediate surrounds are aged and in deteriorating condition. Works to replace the fence are required to meet the venue's ongoing operational, safety and security requirements and to improve presentation.

This work will improve security at MSAC with updated entry and exit points and will address risks associated with access to water services and fire hydrants.

We will also replace damaged and cracking footpaths, build new retaining walls and update garden beds to improve the area's aesthetic.

What are we doing?

The northern fence will be replaced, starting at Sir Albert Café around the outdoor pool and ending at the corner of the outdoor grandstand.

Paths will be realigned and repaired where they are in poor condition.

Access gates will be updated and automated.

Garden beds and retaining walls will be redefined to control soil and mulch spills over pathways and into drains.

Screens and cabinets around fire connection points and at the café will be replaced.

Works will improve presentation of the site and surrounding pathways through repair, replacement and realignment, while retaining walls will allow for new garden beds.

Impact

Some pedestrian pathways will be closed with diversions and signage in place. **(See map, right)**

The project will also require intermittent road closures, with traffic management in use as required.

The outdoor pool will remain open but its dedicated amenities will be closed. Aquatics foyer amenities will still be available.



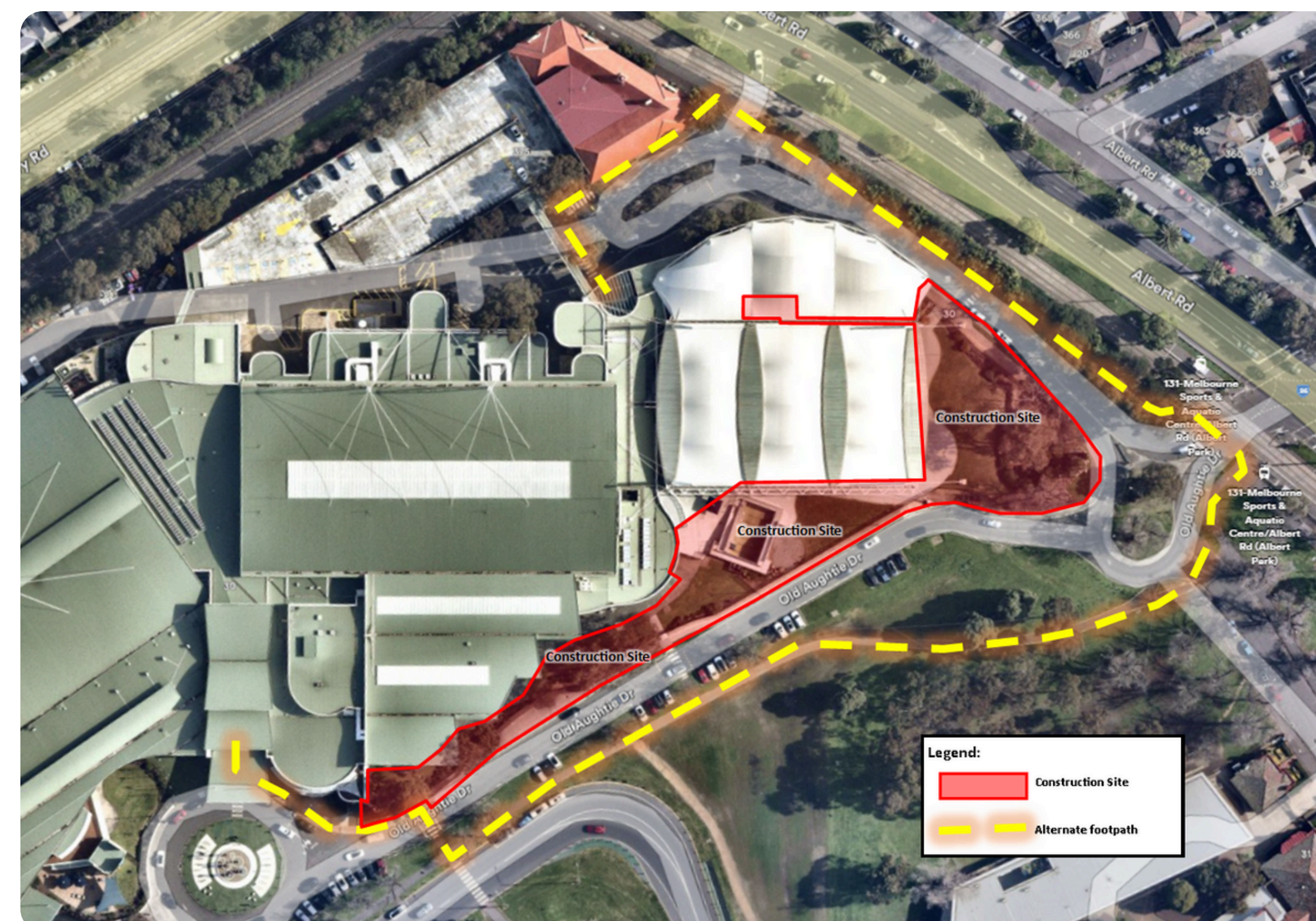
STATE
SPORT
CENTRES

#YOURSTATEYOURSPORT

statesportcentres.com.au



Alternate access path



Site works timeline

- August**
 - Demolition and excavation
- Footpaths construction
- Foundations and services
- Fence and gates construction
- Gate controls completed; Fence and path works complete
- October**
 - Site works and cleanup complete